



Electric Boat Rental
EST. ⚓ 2017

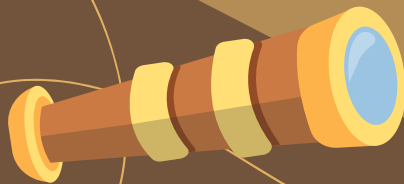
The Ultimate Newport Beach

SCAVENGER HUNT

Extravaganza



Embark on an unforgettable journey with our Newport Beach Scavenger Hunt! Navigate and explore as you uncover the hidden gems of our beautiful harbor!





The Lighthouse

This lighthouse is a sailing center landmark!
It sits in the Marina Bay park and they say it is the
window to the harbor.



Before it was a community park, back in 1919 this was a
campground for only 75 cents a day!
Then in the 1950s the campground was converted into a
mobile home park.





The Statue of Liberty

The replica of the Statue of Liberty is among the whimsical sculptures found in Newport!

HINT!

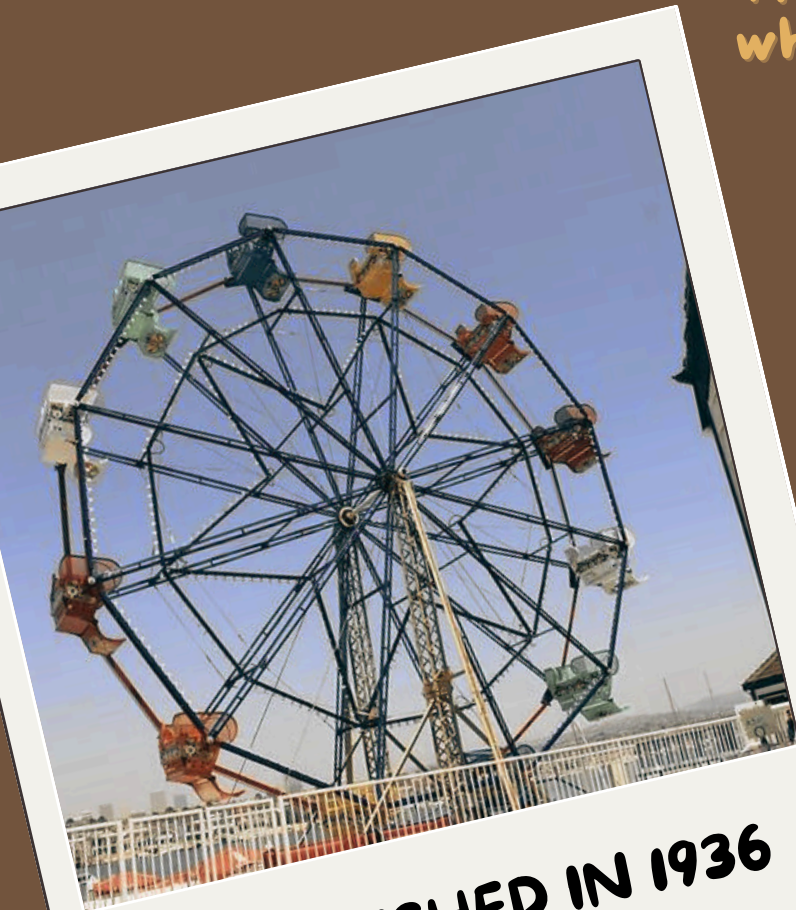
ONE IS BY THE AMERICAN
LEGION AND THE OTHER IS
ON THE PENINSULA!





Ferris Wheel

Since 1936, the Fun Zone at Balboa Village has been a beloved destination, offering affordable entertainment for all ages. Its most iconic attraction, the Ferris wheel, has delighted over 6.5 million riders with breathtaking views of Newport Harbor and the Pacific Ocean. This famous Ferris wheel also gained pop-culture fame by appearing in Childish Gambino's hit music video "3005"!



ESTABLISHED IN 1936



THE FUN ZONE



BALBOA ISLAND

4

The Teddy Bear House



Over the past thirty years, Marcy Cook has amassed an impressive collection of 3,458 stuffed bears. Her collection consists of ordinary, fun stuffed animals rather than expensive ones. Sometimes, she ends up with duplicates, as she occasionally forgets which bears she already owns!



5

John Wayne's Former Home

John Wayne aka "The Duke" is most famous for his Western films starring in the award-winning "True Grit" (1969), "Sands of Iowa Jima" (1946) and many more blockbusters from the beloved cowboy.

Although he was Hollywood's favorite cowboy, he was a nautical man at heart. Wayne's most valuable possession was his yacht, Wild Goose, which can still be found in Newport's Harbor today! Wild Goose was listed as U.S. National Register of Historic Places in 2011.

**CAN YOU SPOT THE
WILD GOOSE?**



6

Balboa Pavilion



Many businesses have occupied it from a bowling alley, a post office, a museum, to a bootleg casino! Today it still serves the public as a restaurant and a marine recreation facility.

Balboa Pavilion is a historical landmark for Newport Beach and one of California's last recreational pavilions standing from the early 1900s. Balboa Pavilion was built to attract people from all around for entertainment and land mark.



Shirley Temple's Former Home

7



SHIRLEY IS A 1930'S ORIGINAL
CHILD MOVIE STAR! KNOWN
FOR HER DANCING AND
SINGING BUT MORE FAMOUSLY
KNOWN IN NEWPORT AS THE
FIRST "MISS NEWPORT BEACH"
AT AGE 13!





The Ferry



The Balboa Island Ferry has been a cornerstone of Newport Beach since 1919, providing a scenic and reliable crossing of Newport Harbor. Owned and operated by the Beek family, who also manage Island Marine Fuel, this iconic ferry offers picturesque views of the bay during its short journey to and from Balboa Island. Over the years, the fare has increased from 10 cents to a few dollars!





Argyros's Home



The property at 32 Harbor Island Road in Newport Beach, CA, is owned by George Argyros, a prominent real estate investor and former U.S. Ambassador to Spain. Argyros is well-known for his significant contributions to the real estate market and his philanthropic efforts. From 1981 to 1989 he was the owner of the Seattle Mariners baseball team. This property boasts a striking fountain occupying one plot of land and the main house is situated on the adjacent plot!

